

Model 235 Vibration Meter

Features:

Model 235 measures overall vibration amplitude in the range of 60 to 420,000 RPMs on rotating machinery. Applications include checking vibration conditions on bearings, motors, fans and pumps. The portable, battery-operated, hand-held Meter features a standard 100 mV/g Accelerometer for measuring vibration Displacement, Velocity and Acceleration. The Meter includes a 5' straight pickup cable and a magnetic base attachment for the Pickup.

Model 235 Kit Includes:

- Meter with Batteries, Cable and 601 Pickup (shown)
- Magnetic Base
- Probe Tip
- Carrying Case
- Manual and Calibration Certificates
- "B" Book Guide to Vibration Measurement

Specifications:

AMPLITUDE METER RANGE:

- Displacement: 0.015 to 199.9 mils (peak-peak)
- Velocity: 0.001 to 199.9 in/sec (peak)
- Acceleration: 0.001 to 199.9 g's (peak)

RANGE: Automatic Scaling Over 3 Ranges

- High 200
- Medium 20
- Low 2

SENSITIVITY:

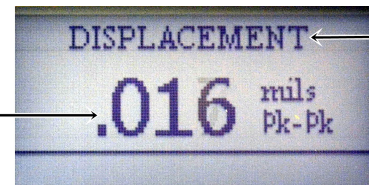
- Displacement: 0.000001 inch (0.001 mil) (1 micro-inch)
- Velocity: 0.001 inch
- Acceleration: 0.001 g

ACCURACY: 5% of Full Scale

PICKUP

FREQUENCY

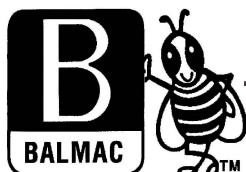
- RESPONSE: 600 to 420,000 RPM (10 to 7000 Hz)



Vibration Reading

Vibration Units

- DISPLAY: Graphic LCD with Low Battery indicator
- INPUT: Industrial ICP Accelerometer (100 mV/g) Acceleration Range 80 g peak
- CONTROLS: Sealed 4 Button Keypad
- POWER: 4 Size AA Alkaline batteries
- OPERATING TEMPERATURE: 32° to 122°F (0° to 50°C)
- ENVIRONMENTAL: Relative humidity 0-90% non-condensing
- DIMENSIONS:
 - Model 235 3.6" W x 5.7" W x 1.65" D
 - Carrying Case 13.5" H x 10.5" W x 4.5" D
- WEIGHT:
 - Meter and Accessories 3.6 lb
 - Meter, Pickup and Cable 1.13 lb



BALMAC INC.
8205 Estates Pkwy, Ste N
Plain City, OH 43064-8080 USA

Telephone: 614-873-8222
Email: sales@balmacinc.com

balmacinc.com